

# tp App Launcher

Prepare and download everything you need  
for using the tp App Launcher

08.05.2020

Eisenburger Chase GmbH

# Agenda

## Download and install the certificate

- Download the certificate
- Install the certificate

## Download and install the tp App Launcher

- Download the setup file
- Installation of the tp App Launcher

## Using the tp App Launcher

- Starting the tp App Launcher
- Authentication
- Installing software
- Relogging
- Switch view

# Download and install the certificate





# Download the certificate

---

- You need to download and install a security certificate from EisenburgerChase GmbH in order to check that the downloaded tools are provided by EisenburgerChase GmbH.

- Download the EisenburgerChase Developer Certificate

Click [HERE](#) to download the certificate.

Save the file *SecurityCertificate-EisenburgerChase.cer* on your computer.

- Start the Installation

Using Windows Explorer, navigate to the selected download folder and double click on the downloaded certificate.

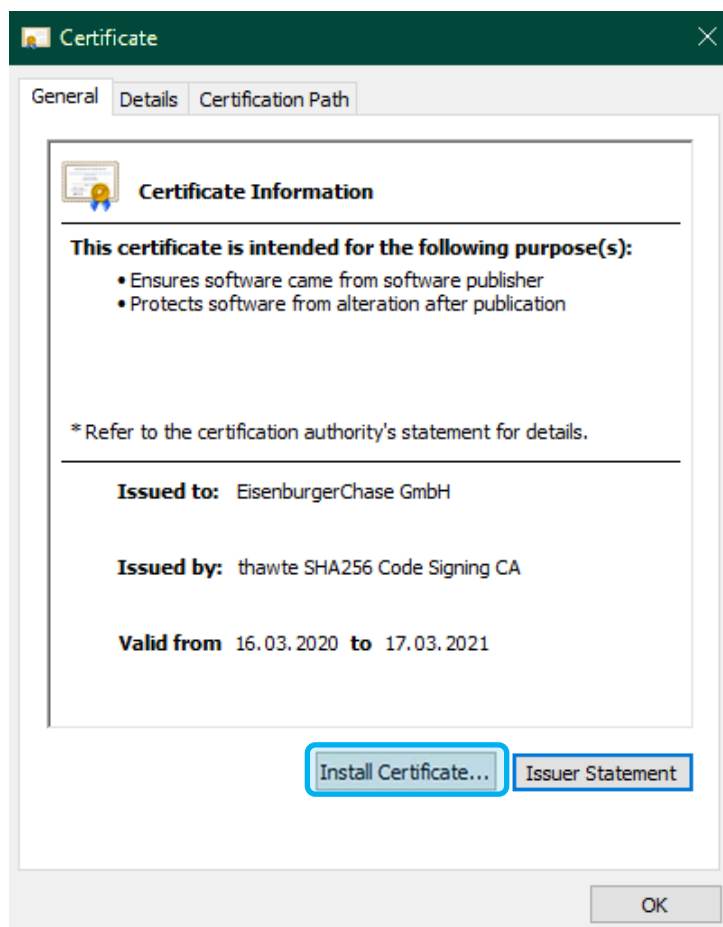
You can also launch the installation of the certificate directly from your browser.

- **Please do NOT use Microsoft Internet Explorer for downloading the file. Better use Google Chrome or Mozilla Firefox.**

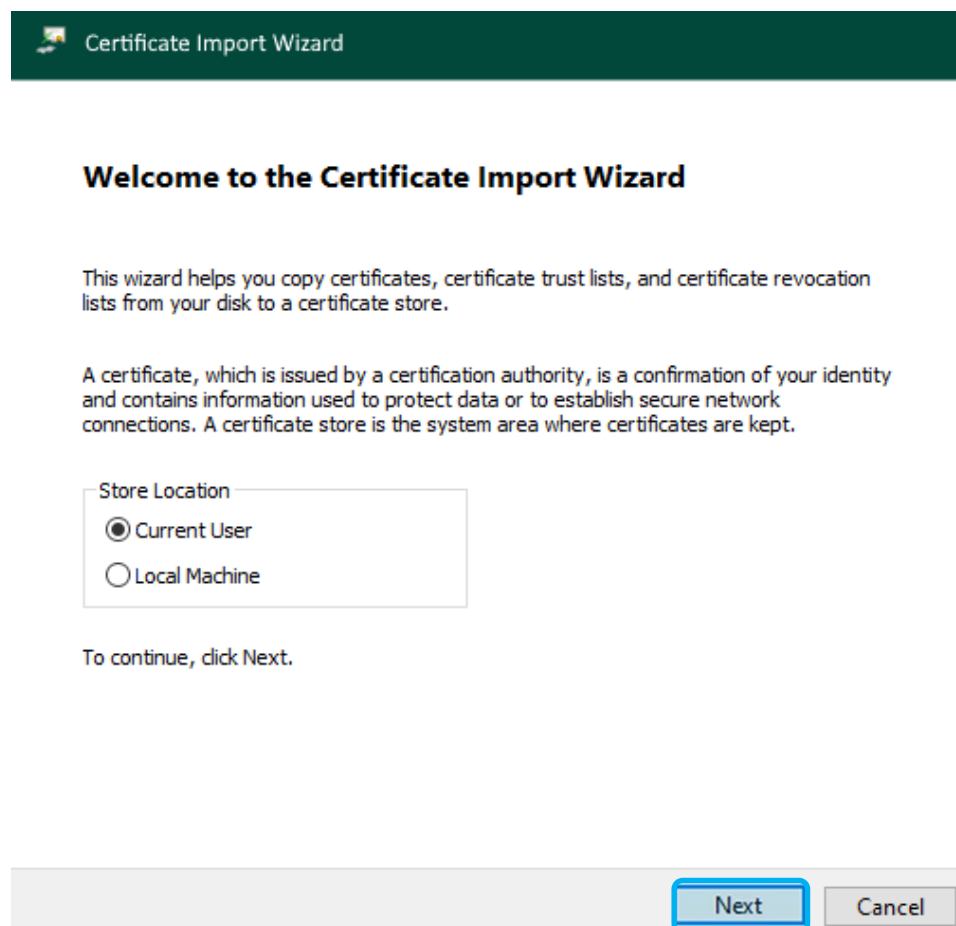


# Install the certificate

Click the button **Install Certificate...**



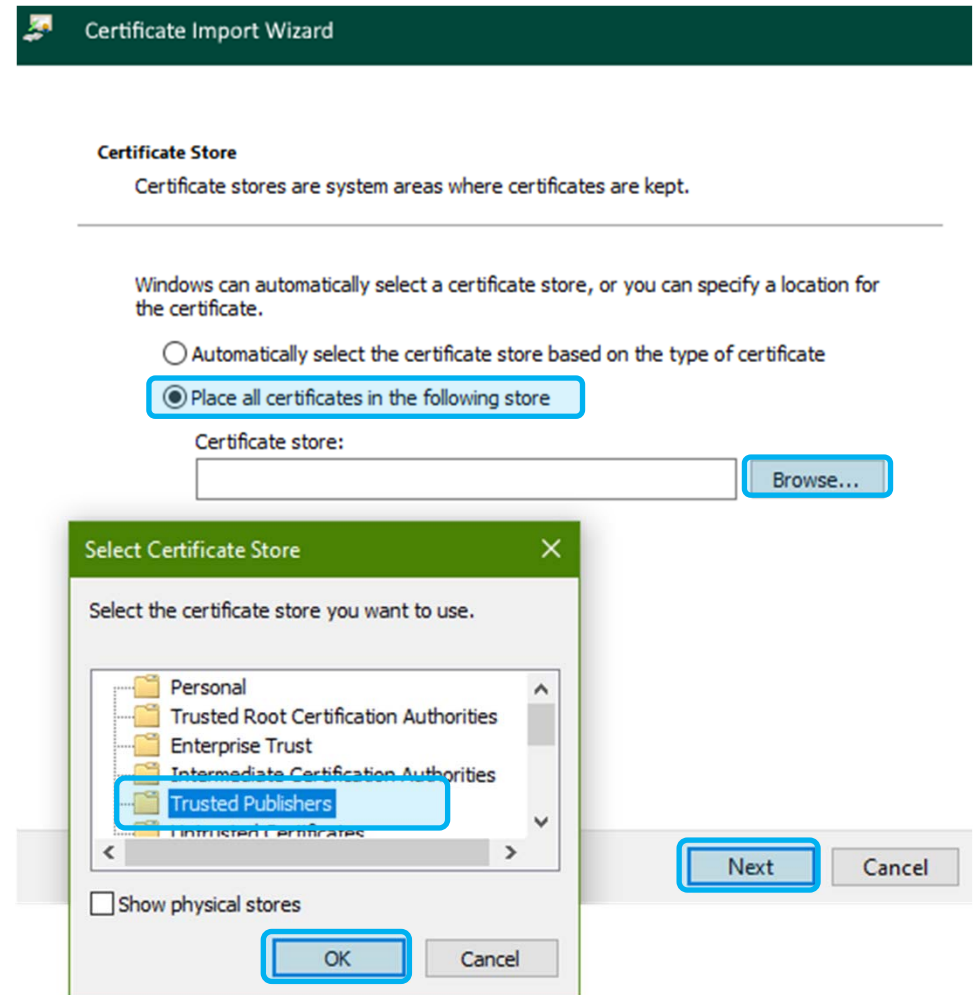
Click Next on the wizard's start page





# Install the certificate

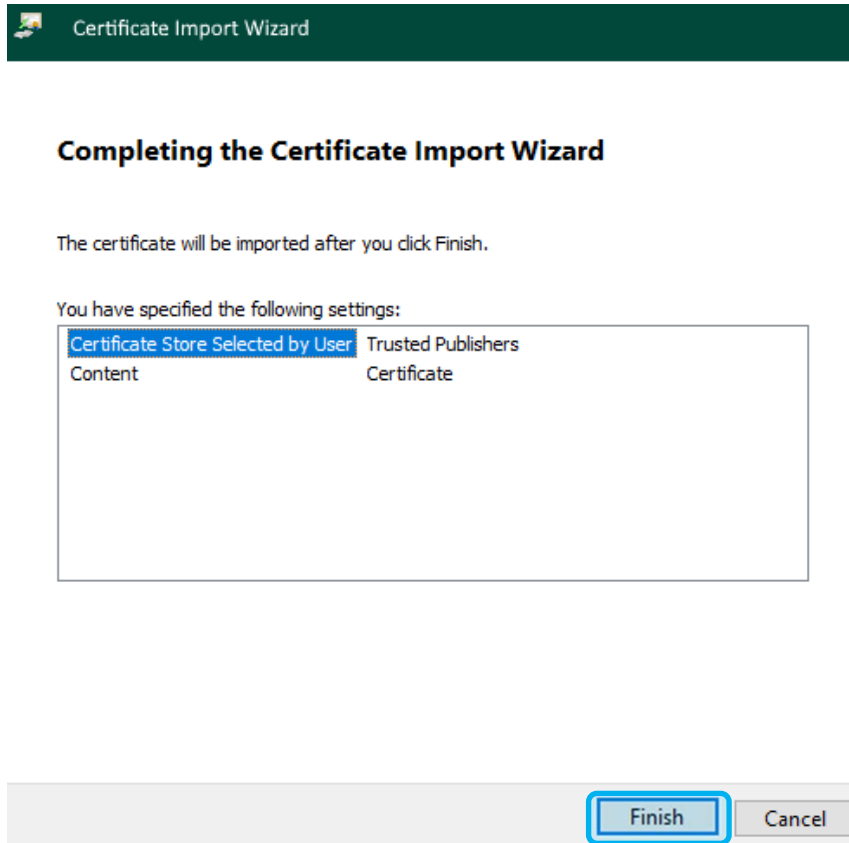
- Click on **Place all certificates in the following store**, then click **Browse...**
- Select **Trusted Publishers** and confirm with **OK**
- Then click **Next**





# Install the certificate

- Check your settings and click **Finish** to import the certificate.



# Download and install the tp App Launcher







# Download the setup file

---

- Download the tp App Launcher setup file

Click [HERE](#) to download the setup file.

Save the file *EBC SAK Installer.application* on your computer.

- Start the Installation

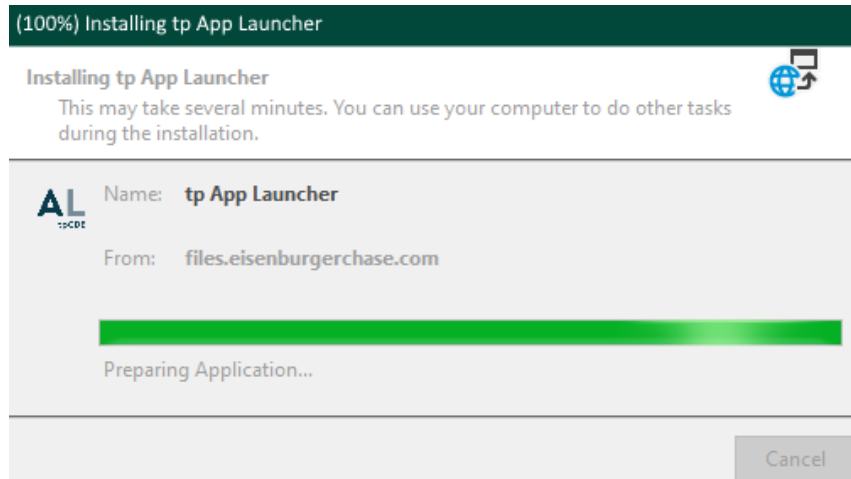
Using Windows Explorer, navigate to the selected download folder and double click on the downloaded setup file.

You can also launch the installation of the setup file directly from your browser.

- **Please do NOT use Microsoft Internet Explorer for downloading the file.**  
**Better use Google Chrome or Mozilla Firefox.**



# Installation of the tp App Launcher



- The tp App Launcher is automatically downloaded, installed and started. No further user action or administrator rights are needed.\*

\* This statement concerns the Microsoft standard and may have been restricted by your IT department.

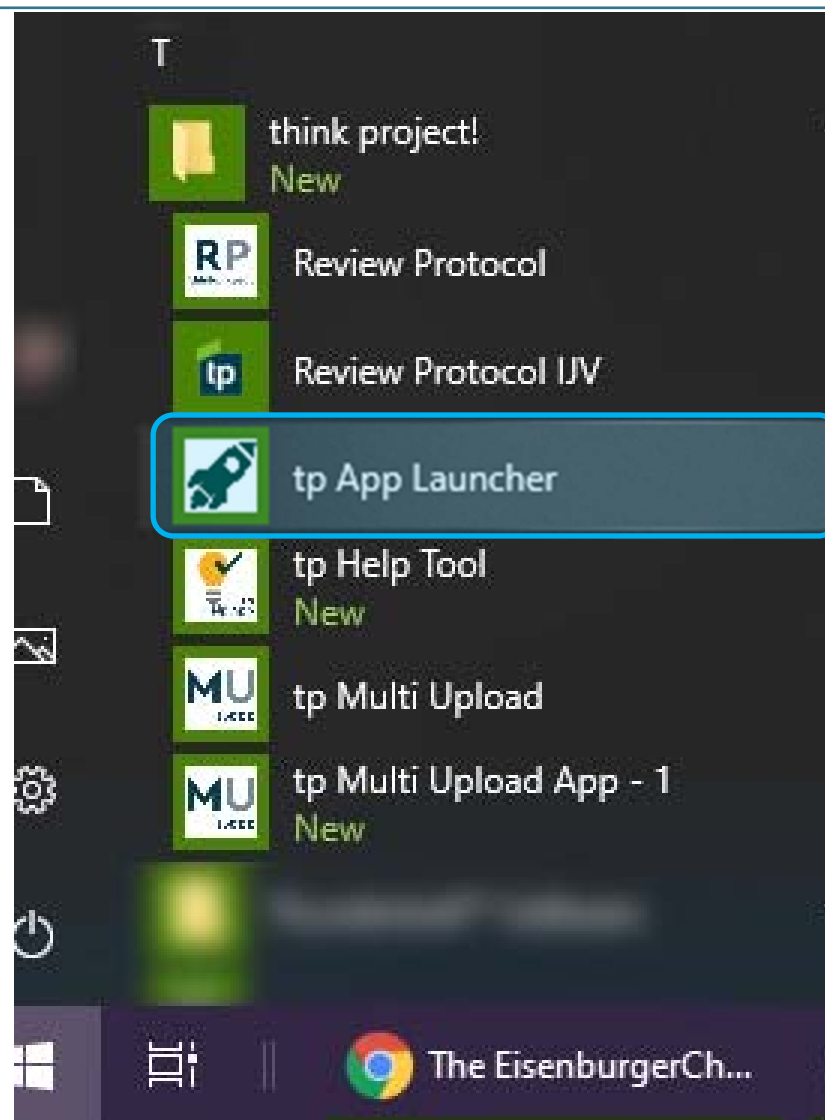
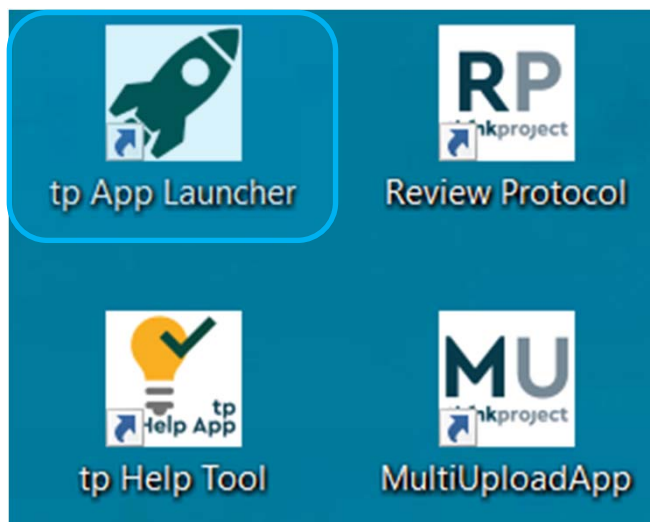
# Using the tp App Launcher





# Starting the tp App Launcher

- After installing the tp App Launcher you can start it using your Windows Start Menu or by double clicking the App Icon on your Windows Desktop.





# Authentication

Once a day you have to log in to the system at the first login. Use your tpCDE user data for this.

tp App Launcher - Version 3.0.7.0

thinkproject!

Benutzername

Passwort

Bitte melden Sie sich mit Ihrem tp!-Benutzernamen und nicht mit Ihrer E-Mail-Adresse an.

Login Abbrechen

Attention!

Enter your **user name** here and not your e-mail address registered with tpCDE.

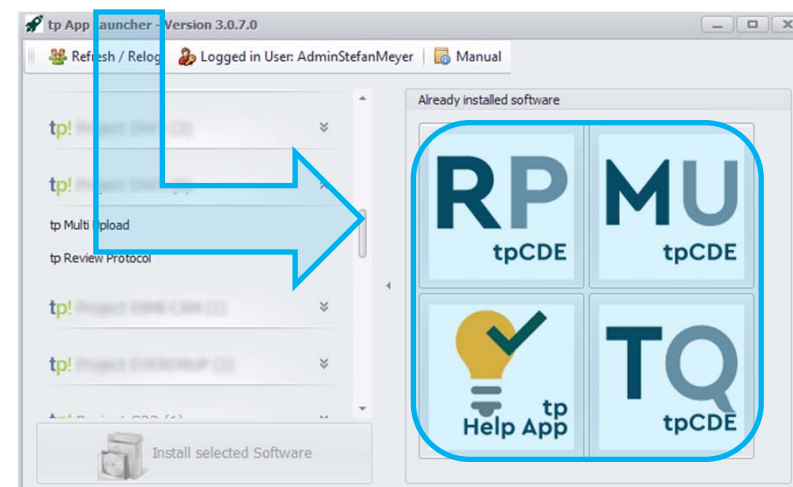
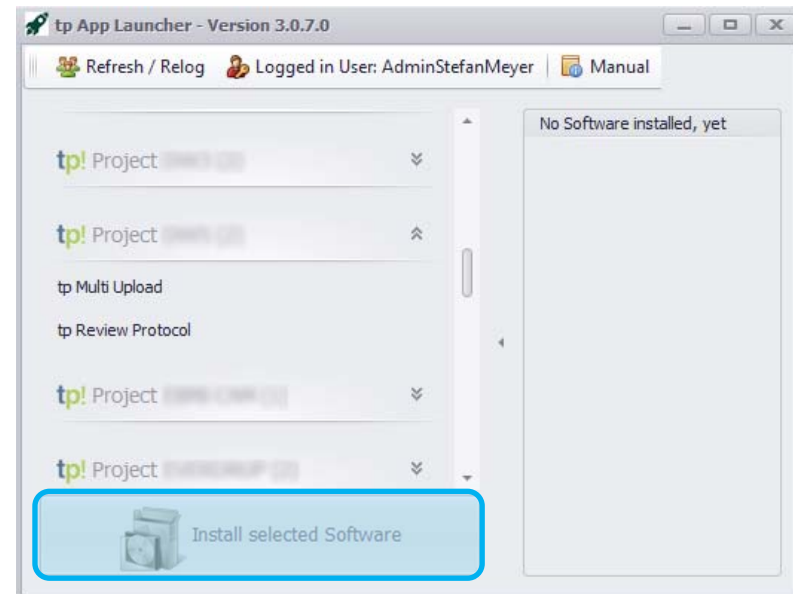


# Installing software

On the left side you can see all projects that are assigned to you.

Click on a project name to see the available tools.

After selecting the desired tool and clicking on **Install selected Software**, the selected tool will be installed, started and its icon will be placed on the right as a quick launch icon.

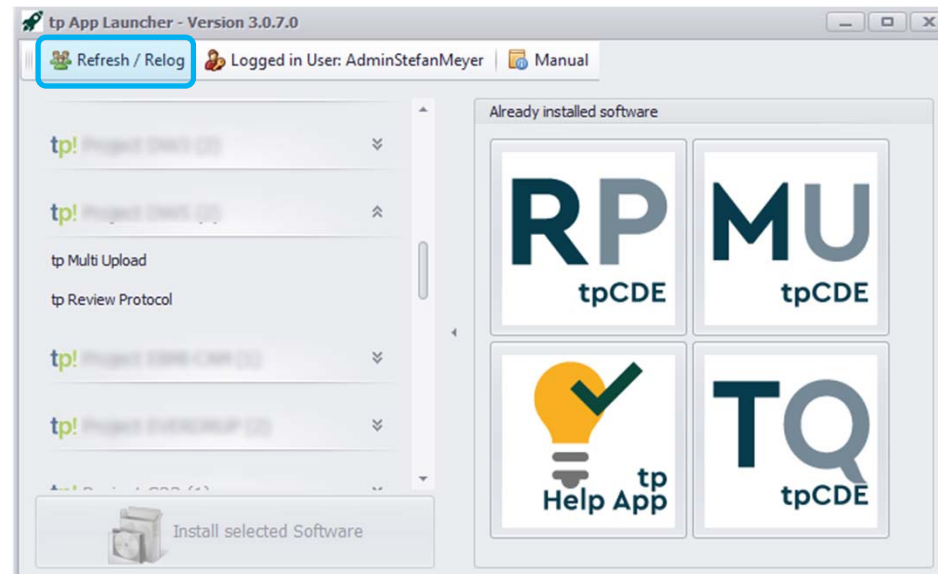




# Relogging

If you want to login with another user, click on the button [Refresh / Reelog](#).

Then enter the new user data as described in [Authentication](#).

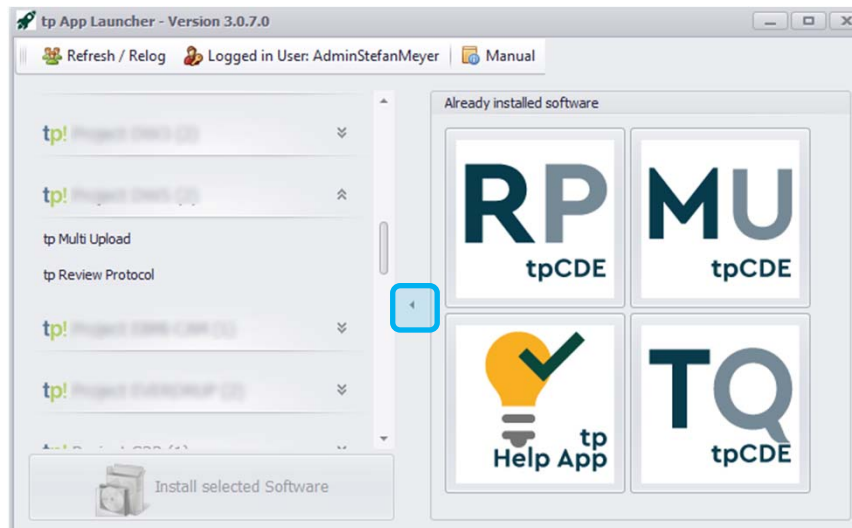


The list of available software will be refreshed - according to the project this user is assigned to.



# Switch view

A click on the small triangle between the list of available and already installed software compresses the view so that only the already installed apps are displayed.



Clicking the triangle again will expand the list of available software.

